



## 5 key questions to ask before buying your next home.

### 1. Are your homes ENERGY STAR® certified?

Yes, 100% of the homes we build are ENERGY STAR certified. In fact, we are committed to exceed the latest ENERGY STAR standards in every Beazer home which means wall-to-wall comfort and significant energy savings every month.

### 2. How do you deliver value and quality in your homes?

We're proud to have the quality of construction that not every builder can claim. From our high-caliber construction practices to our rigorous inspections, Beazer ensures your home is built to provide more quality and more comfort. Beazer calls it Surprising Performance—the result of experienced people, industry-leading processes and materials, coming together to build high-performance homes that save you money every month. In addition, all new Beazer homes are built Network Ready, which provides immediate Internet connectivity at no additional cost, allowing homebuyers to easily add their technology of choice after closing.

### 3. Do I have flexibility to change my floorplan?

Absolutely. Beazer's Choice Plans™ offer flexible floorplan options that allow you to personalize your primary living areas - giving you a choice of how you want to live in the home, at no additional cost. Ask your New Home Counselor which Choice Plans™ are available in your community.

### 4. Can I personalize the finishes in the home?

Yes, one of the most enjoyable parts of building a new home from the ground up is selecting colors, flooring, appliances, and optional features that reflect your personal style. Our design experts will partner with you to identify design selections to meet your needs, while guiding you through the entire experience.

### 5. How do I know I'm choosing the right mortgage program?

Beazer offers the many benefits of Mortgage Choice, which allows you to easily compare multiple offers and choose the loan that works for you. In every Beazer community, we've identified a group of Choice Lenders who provide diverse home loan programs, competitive rates and fees, and outstanding customer service. You can save money to buy more home, get more options, or have a lower monthly payment. With Mortgage Choice, the choice is yours!

GET MORE IN A NEW HOME | [BEAZER.COM](http://BEAZER.COM)

Standard options and features lists as well as depictions of floor plans and elevations (each, a "Standard") are expressly not made part of any Purchase and Sale Agreement ("PSA"), nor do they give rise to any contractual relationship between you and Beazer Homes. Standards are intended only to provide a general overview. You may purchase an upgrade or, in its sole discretion, Beazer may substitute an alternative as provided in the PSA. The PSA's Addendum A will define what is included in your home. If you sign a Standard, it is simply your acknowledgement of receipt of the Standards applicable to this model of home. Furthermore, due to our consistent efforts to improve our homes, Beazer reserves the right to make changes without notice or obligation to plans, elevations and pricing. Illustrations and specifications are believed correct at time of publication, and are not intended to create any warranty or contract rights. All plans, specifications, features, materials and appliances are subject to availability, change or substitution deemed advisable by Beazer Homes or as required by local building code or law. This feature sheet does not represent all standard specifications in your home. Details listed may vary depending on the plan, elevation and options chosen. Please consult your New Home Counselor for details. © 2021 Beazer Homes. 05-21



## Everett

### Shadow Crest at Mesquite Plan V877

3-4 beds / 2.5-3 baths  
2,543-2,736 sq. ft.  
2-3 car garage

PRELIMINARY



Tuscan L Elevation



Arts & Crafts L Elevation



Spanish Colonial L Elevation



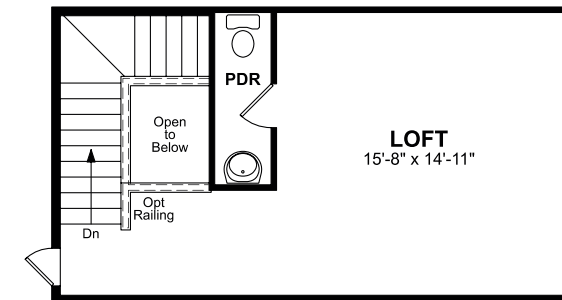
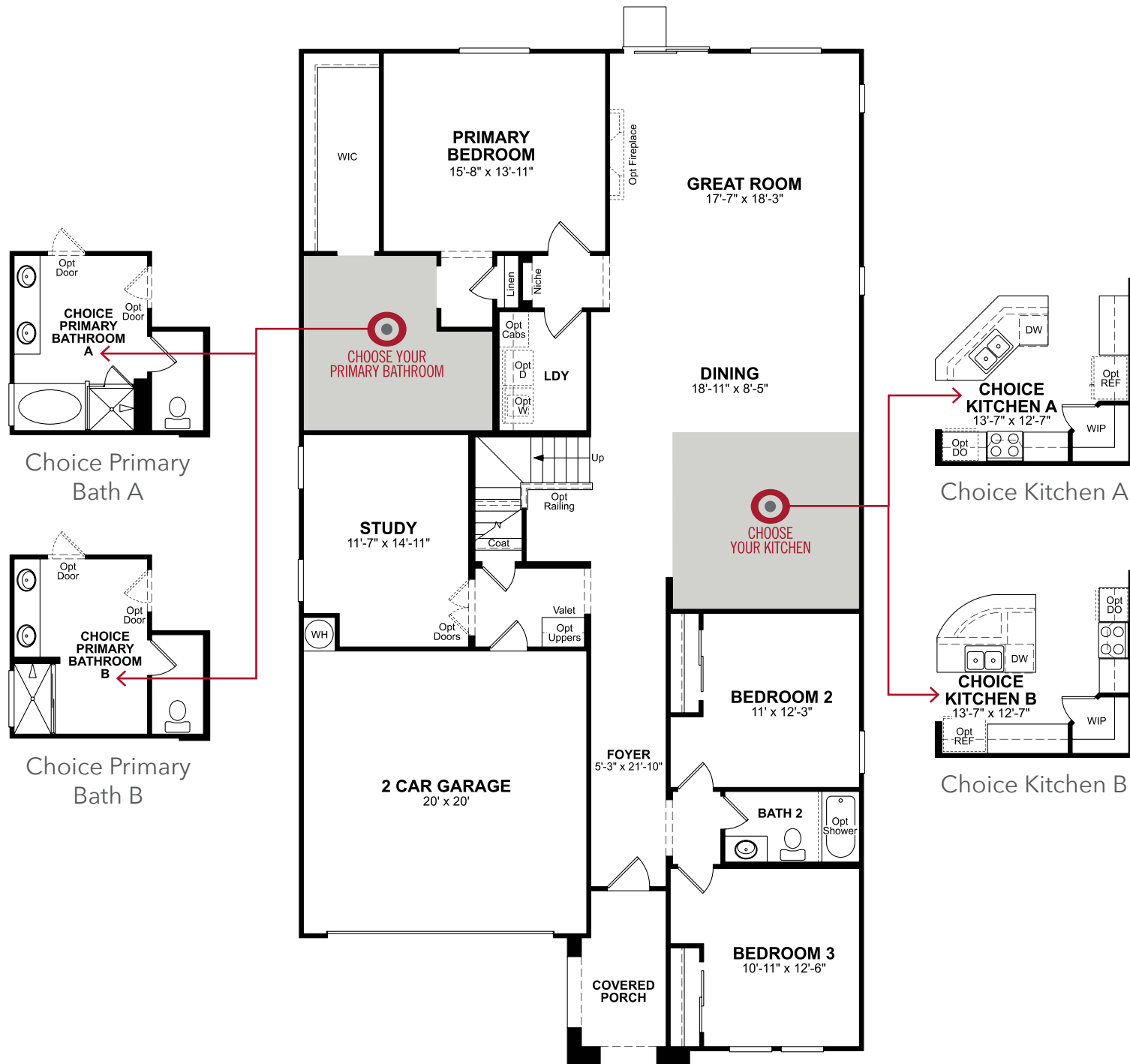
# BEAZER HOMES Choice Plans™

Personalize your floorplan—at no additional cost!

PRELIMINARY

First Floor

Second Floor



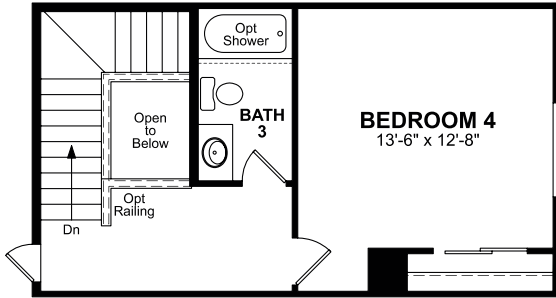
Legend	
OPT - Optional	HVAC - Heating Ventilating and Air Conditioning
ILO - In Lieu Of	MECH - Mechanical Room
UTIL - Utility	WO - Wall Oven
WIC - Walk In Closet	MO - Microwave Oven
WIP - Walk In Pantry	LIN - Linen
PDR - Powder Room	PAN - Pantry
SGD - Sliding Glass Door	.....
W - Washer	Dotted Lines Denote Optional Items
D - Dryer	-----
WH - Water Heater	Dashed Lines Denote Elevated Features
DW - Dishwasher	
REF - Refrigerator	

- Room Choices: No-cost options that change the livability or functionality of a space

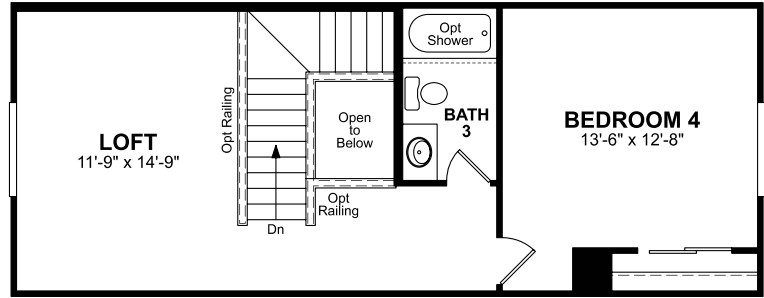


Standard options and features lists as well as depictions of floor plans and elevations (each, a "Standard") are expressly not made part of any Purchase and Sale Agreement ("PSA"), nor do they give rise to any contractual relationship between you and Beazer Homes. Standards are intended only to provide a general overview. You may purchase an upgrade or, in its sole discretion, Beazer may substitute an alternative as provided in the PSA. The PSA's Addendum A will define what is included in your home. If you sign a Standard, it is simply your acknowledgement of receipt of the Standards applicable to this model of home. Furthermore, due to our consistent efforts to improve our homes, Beazer reserves the right to make changes without notice or obligation to plans, elevations and pricing. Illustrations and specifications are believed correct at time of publication, and are not intended to create any warranty or contract rights. All plans, specifications, features, materials and appliances are subject to availability, change or substitution deemed advisable by Beazer Homes or as required by local building code or law. This feature sheet does not represent all standard specifications in your home. Details listed may vary depending on the plan, elevation and options chosen. Please consult your New Home Counselor for details. © 2021 Beazer Homes. 05-21

Structural options that add square footage or other structure(s) to the home for a fee



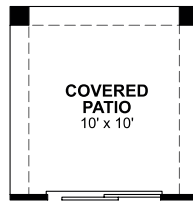
Opt Bedroom 4/Bath 3



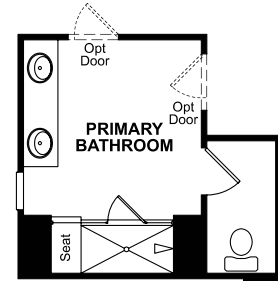
Opt Alternate Second Floor



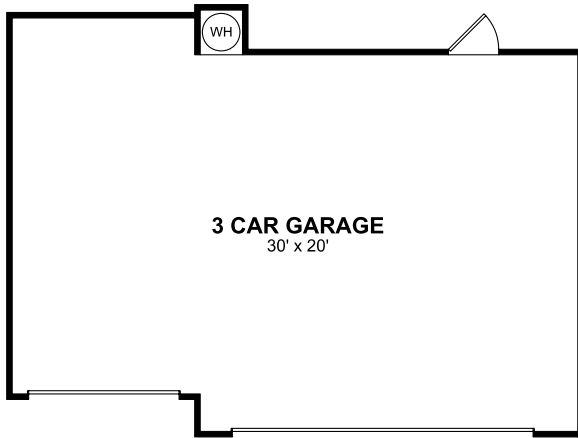
Opt 12' Sliding Glass Door



Opt Covered Patio



Opt Deluxe Primary Bathroom B



Opt 3 Car Garage

OPT - Optional	HVAC - Heating Ventilating and Air Conditioning
ILO - In Lieu Of	MECH - Mechanical Room
UTIL - Utility	WO - Wall Oven
WIC - Walk In Closet	MO - Microwave Oven
WIP - Walk In Pantry	LIN - Linen
PDR - Powder Room	PAN - Pantry
SGD - Sliding Glass Door	.....
W - Washer	Dotted Lines Denote
D - Dryer	Optional Items
WH - Water Heater	-----
DW - Dishwasher	Dashed Lines Denote
REF - Refrigerator	Elevated Features

GET MORE IN A NEW HOME | [BEAZER.COM](http://BEAZER.COM)

This Paid Options Sheet is informational in nature and is expressly not made part of any Purchase and Sale Agreement ("PSA"), nor does it give rise to any contractual relationship between you and Beazer Homes. This sheet is intended only to provide a general overview of paid options that may be available. You may purchase an option if available or, in its sole discretion, Beazer may substitute an alternative as provided in the PSA. The PSA's Addendum A will define what is included in your home. If you sign this sheet, it is simply your acknowledgement of receipt of the Paid Options that may be available. Furthermore, due to our consistent efforts to improve our homes, Beazer reserves the right to make changes without notice or obligation to plans, elevations and pricing. Illustrations and specifications are believed correct at time of publication, and are not intended to create any warranty or contract rights. All plans, specifications, features, materials and appliances are subject to availability, change or substitution deemed advisable by Beazer Homes or as required by local building code or law. Details listed may vary depending on the plan, elevation and options chosen. Please consult your New Home Counselor for details. ©2021 Beazer Homes 06-21